





## TESTE DE HABILIDADES ESPECÍFICAS EM MÚSICA 2013/1º

### Etapa Escrita

Nome: \_\_\_\_\_


- 1)  Ouça com atenção ao som reproduzido. Desenhe uma possível representação para o som ouvido no gráfico abaixo, de acordo com os parâmetros musicais de cada eixo:



- 2)  O trecho musical em questão é realizado com o Agogô, instrumento de percussão com duas alturas distintas: uma grave e outra aguda. Continue a partitura abaixo com base no trecho ouvido, utilizando a Semínima como referência para a pulsação, sendo esta equivalente aos quatro “cliques” que antecedem este trecho musical:

Agudo

Grave

- 3)  Identifique os instrumentos musicais do trecho musical ouvido, percorrendo brevemente sobre a que naipe/classificação cada um pertence, sua construção, forma de produção do som, estilos musicais onde é mais frequente e compositores típicos de cada instrumento:

---

---

---

---

---


---

---

---

---

---

- 4)  Identifique o estilo musical do trecho ouvido, mencionando sua região de origem, instrumentação típica e músicos conhecidos por compor ou tocar obras neste estilo:

---

---

---

---

---

---

---

---

---

---

- 5) No item (a) abaixo, crie uma linha melódica para a progressão harmônica indicada pelas cifras, utilizando uma métrica de livre escolha. No item (b), escreva uma possível progressão de cifras para a melodia escrita:

a)




Diagram showing a musical staff with five measures, each corresponding to a chord: C, Dm, F, G7, and C. The staff is empty, intended for the student to write a melody.

b)



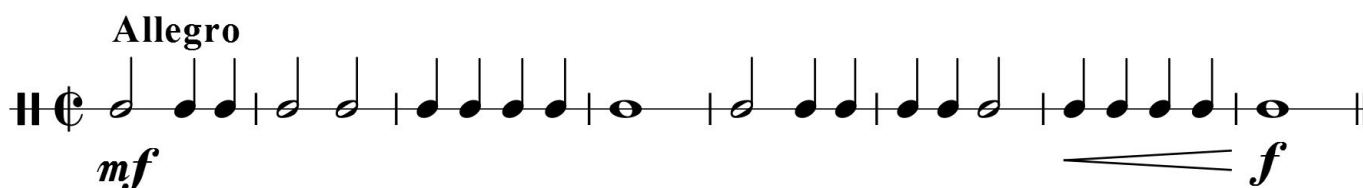
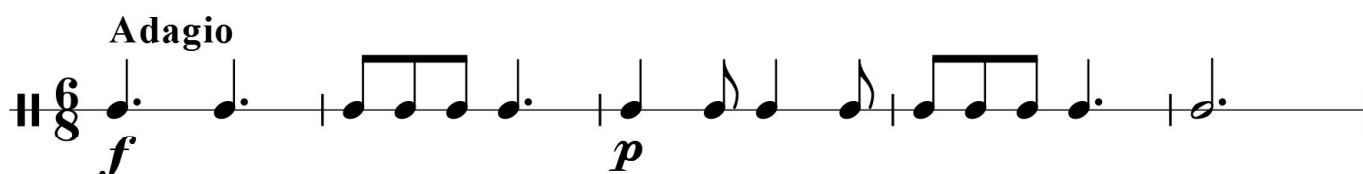
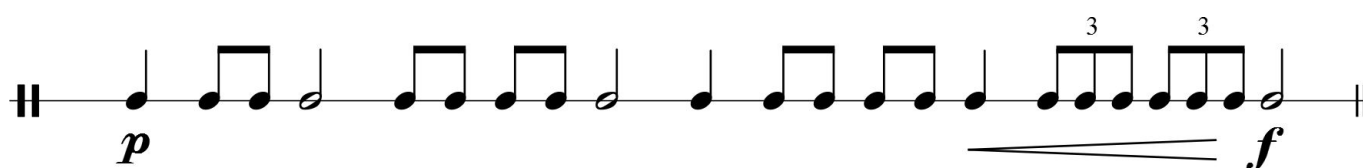
Diagram showing a musical staff with a key signature of two sharps (D major) and a 2/4 time signature. The melody consists of two phrases, each spanning four measures. The first phrase starts on D4 and ends on D5. The second phrase starts on D4 and ends on D5. The melody is written in a simple, stepwise fashion.



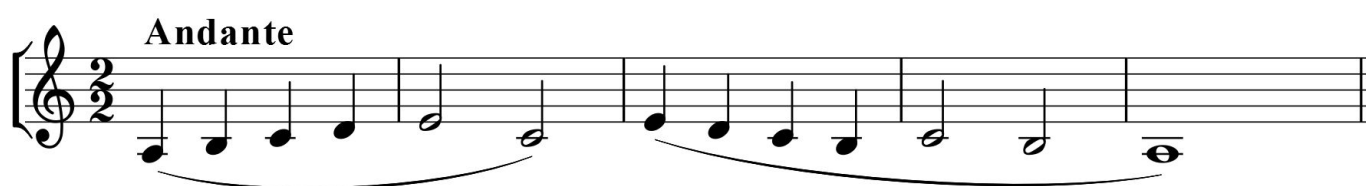
## TESTE DE HABILIDADE ESPECÍFICA EM MÚSICA 2012/2

### Etapa Prática – Leitura e Solfejo

- 1) Escolha um trecho abaixo para realizar uma leitura rítmica, utilizando a voz, palmas ou um instrumento de percussão. Você terá um minuto para leitura silenciosa:



2) Escolha um trecho abaixo para solfejo (leitura melódica). Você terá um minuto para realizar leitura silenciosa:





## TESTE DE HABILIDADES ESPECÍFICAS EM MÚSICA 2013/1º

### Etapa Prática – Performance Musical

Esta etapa consiste na execução de uma peça, dentre as seguintes opções:

- 1) Uma peça de livre escolha de no máximo 4 (quatro) minutos, com 1 (um) minuto de arguição para justificar sua escolha;
- 2) Leitura de uma dos trechos disponíveis abaixo – com exceção do último, exclusivo para candidatos a Percussão e Bateria – com 1 (um) minuto de leitura silenciosa:

#### Allegretto

Two staves of music in 4/4 time. The first staff starts with a treble clef, a key signature of one sharp (F#), and a tempo marking of *mf*. It contains two measures of music, each with a slur over it, followed by a rest. The second staff continues with two more measures, each with a slur, followed by a rest. The piece ends with a double bar line. Chord symbols are written above the notes: C, Dm, Am, C, Dm, C, Dm, Em, G7, C, F, C. A dynamic marking of *p* is at the end of the first staff, and *mf* is at the start of the second staff.

#### Andante

Two staves of music in 4/4 time. The first staff starts with a bass clef, a key signature of one flat (Bb), and a tempo marking of *p*. It contains two measures of music, each with a slur over it, followed by a rest. The second staff continues with two more measures, each with a slur, followed by a rest. The piece ends with a double bar line. Chord symbols are written above the notes: C, Bb, Am7, D, F, C, Dm, F, C. A dynamic marking of *mf* is at the end of the second staff.

**Allegro**

First system of the Allegro section in 4/4 time. The first staff begins with a treble clef, a key signature of one flat (B-flat), and a 4/4 time signature. The tempo is marked 'Allegro' and the dynamic is 'mf'. The first staff contains a melodic line with a slur over the first four measures, with chords C, F, G7, and Dm indicated above. The second staff continues the melody with a slur over the last four measures, with chords G7, F, G, F, Em, and F indicated above.

**Andante**

First system of the Andante section in 6/8 time. The first staff begins with a bass clef, a key signature of one flat (B-flat), and a 6/8 time signature. The tempo is marked 'Andante' and the dynamic is 'p'. The first staff contains a melodic line with a slur over the first four measures, with chords F, G, and Dm indicated above. The second staff continues the melody with a slur over the last four measures, with chords F and G indicated above.

Dm

Am

G

Dm

**Allegretto**

First system of the Allegretto section in 4/4 time. The first staff begins with a treble clef, a key signature of one flat (B-flat), and a 4/4 time signature. The tempo is marked 'Allegretto' and the dynamic is 'mf'. The first staff contains a melodic line with a slur over the first four measures, with chords C, F, G7, and Dm indicated above. The second staff continues the melody with a slur over the last four measures, with chords G7, F, G, F, Em, and F indicated above.